



House - Semi-Detached (EPC Rating: D)

20 PARKVIEW DRIVE, COATBRIDGE, ML5 1NL

Offers over

£209,995

FEATURES

- 3 spacious bedrooms
- 2 reception rooms
- Located on Parkview Drive
- Close to local amenities
- Easy access to transport
- Ideal family home
- Viewing highly recommended
- Quiet residential area



**SWEET
HOME**



3 Bedroom House - Semi-Detached located in Coatbridge

Caroline Morrison of Sweet Home Scotland is proud to bring to the market place, this fantastic 3 bedroom semi detached property. Located in the charming sought after location of Parkview Drive, Blairhill, Coatbridge, this delightful house offers a perfect blend of comfort and convenience. Built in 1960, the property boasts a classic design that has stood the test of time, making it an ideal family home.

Upon entering, you are greeted by two spacious reception rooms, providing ample space for relaxation and entertaining guests. These versatile areas can be tailored to suit your lifestyle, whether you envision a cosy sitting room or a vibrant play area for children. The natural light that floods these rooms creates a warm and inviting atmosphere.

The house features three well-proportioned bedrooms, each offering a peaceful retreat for rest and relaxation. With enough space for family members or guests, these bedrooms are designed to accommodate various needs. Family bathroom ensure that morning routines run smoothly and WC providing convenience for busy households.

The property is situated in a friendly neighbourhood, making it an excellent choice for families or those seeking a community feel. With local amenities, schools, and parks nearby, everything you need

Call us on

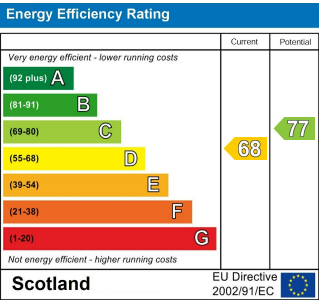
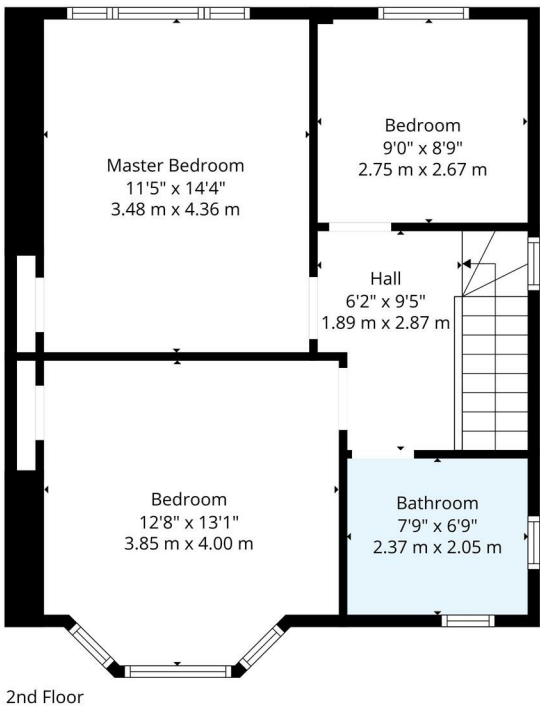
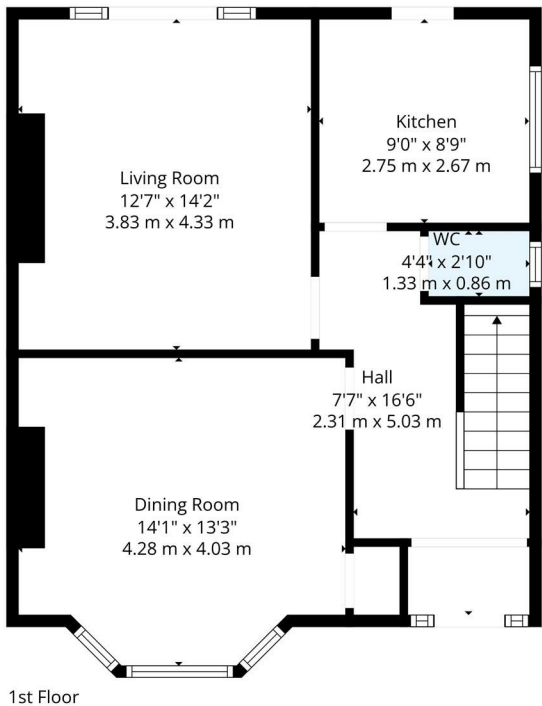
07717504350

sales@sweet-home.co.uk

<https://sweet-home.co.uk/>

Council Tax Band

E



Agents Note: Whilst every care has been taken to prepare these particulars, they are for guidance purposes only. All measurements are approximate and are for general guidance purposes only and whilst every care has been taken to ensure their accuracy, they should not be relied upon and potential buyers are advised to recheck the measurements.



TOTAL: 1154 sq. ft, 108 m2
1st floor: 577 sq. ft, 54 m2, 2nd floor: 577 sq. ft, 54 m2
EXCLUDED AREAS: WALLS: 100 sq. ft, 8 m2

Floor Plan Created By Cubicasa App. Measurements Deemed Highly Reliable But Not Guaranteed.

